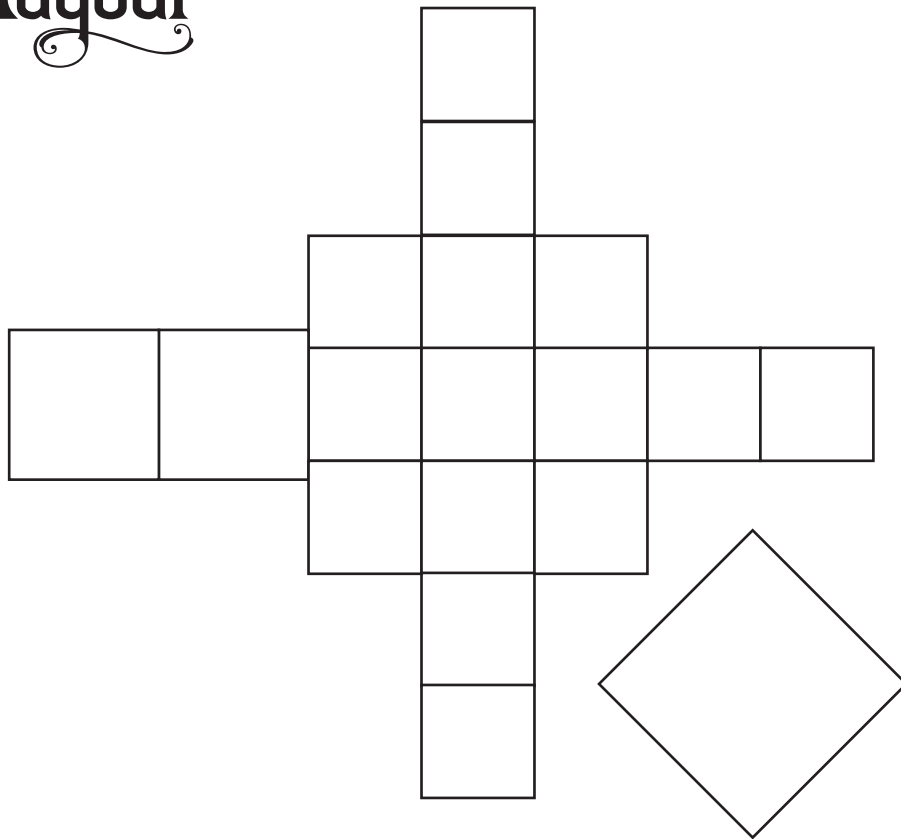


Deck Layout



Sq ft of deck

15 - 8x8 decks = 960 sq ft

2 - 10x10 decks = 200 sq ft

1 - 12x12 deck = 144 sq ft

Total - 1304 sq ft

weight of wood deck

15 - 8x8 decks at 550 lbs = 8250 lbs

2 - 10x10 decks at 750 lbs = 1500 lbs

1 - 12x12 deck = 1000 lbs

Total - 10750 lbs

25 poles at 300 lbs each = 7500 lbs

Treehouse = 600 lbs

Decoration = 5000 lbs

$1304 / 4 \text{ sq ft} = 326 \text{ ppl}$

250 person capacity

$250 \times 200 \text{ lbs per person} = 50,000 \text{ lbs}$

$150 \text{ ppl} \times 200 \text{ lbs} = 30,000$

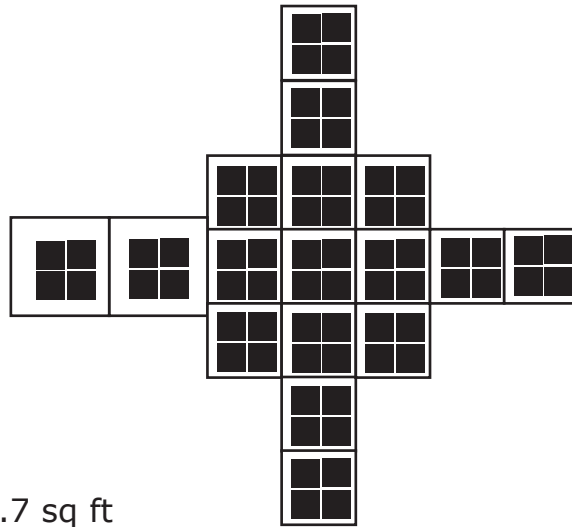
Dead Total weight = 21,850 lbs

Live Total weight craft = 71,850 lbs

Deck Layout

Cubic ft of water is 62.4

Option 1



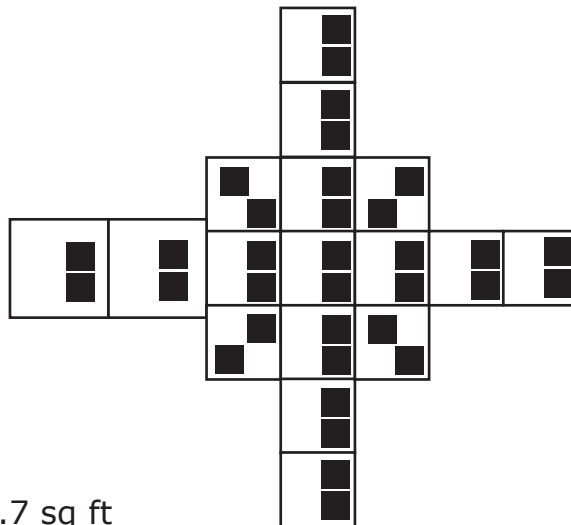
■ 1 block = $32 \times 48 \times 48 = 42.7$ sq ft

$42 * 62 = 2604$ lbs - 50lbs = 2554 lbs

17 docks x 4 floats each = 68 floats

68 floats * 2554 = 173,672 lbs

Option 2



■ 1 block = $32 \times 48 \times 48 = 42.7$ sq ft

$42 * 62 = 2604$ lbs - 50lbs = 2554 lbs

17 docks x 2 floats each = 34 floats

34 floats * 2554 = 86,836 lbs

Deck Layout

$$1 \text{ block} = 32 \times 48 \times 48 = 42.7 \text{ sq ft}$$

$$42 * 62 = 2604 \text{ lbs} - 50 \text{ lbs} = 2554 \text{ lbs}$$

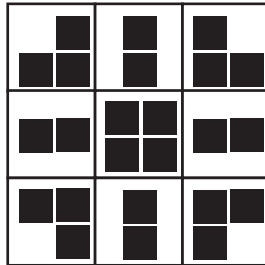
This is what we have:

16 ea 1 lb Virgin EPS - 32" x 48" x 48"

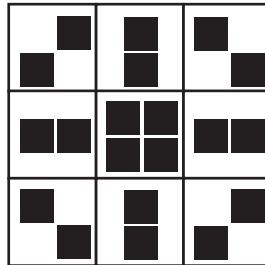
8 ea 1 lb Virgin EPS - 20" x 36" x 48"



$$24 \times 2554 = 61,196$$



$$20 \times 2554 = 51,080$$



Whats on center?

9 - 8x8 decks at 550 lbs = 4950 lbs

1 - 12x12 deck = 1000 lbs

25 poles at 300 = 7500

treehouse = 600 lbs

Decoration = 2500

16,550 lbs

Sq ft of deck

9 - 8x8 decks = 576 sq ft

1 - 12x12 deck = 144 sq ft

Total - 720 sq ft

Deck Layout

1 block = 32x48x48 = 42.7 sq ft

42 * 62 = 2604 lbs - 50lbs = 2554 lbs

This is what we have:

16 ea 1 lb Virgin EPS - 32" x 48" x 48" 

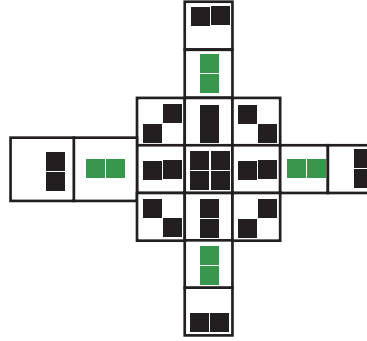
8 ea 1 lb Virgin EPS - 20" x 36" x 48" 

51,104 lbs

28 x 2554 = 71,512

8 x 1280 = 10,240

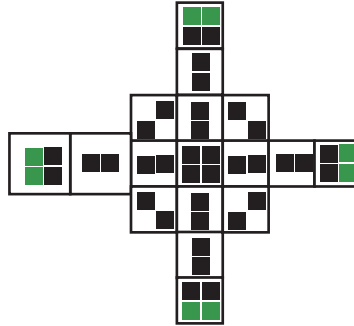
81,752



36 x 2554 = 91,944

8 x 1280 = 10,240

102,184



1 block = 32x60x48 = 53 sq ft 

53 * 62 = 3286 lbs - 50lbs = 3236 lbs

17 docks x 2 floats each = 34 floats

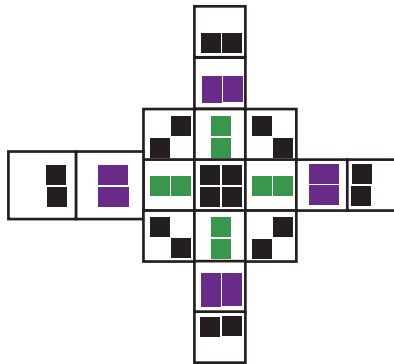
34 floats * 2554 = 86,836 lbs

8 x 3236 = 25,888

8 x 1280 = 10,240

24 x 2554 = 61,296

97,424

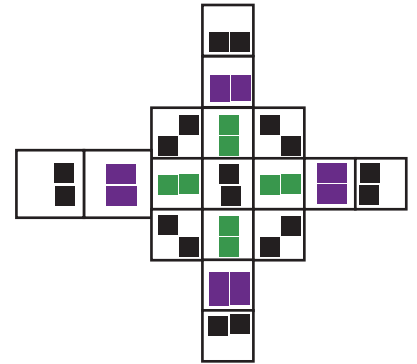


8 x 3236 = 25,888

8 x 1280 = 10,240

22 x 2554 = 56,188

92,316



8 x 3236 = 25,888

8 x 1280 = 10,240

22 x 2554 = 56,188

92,316

